



GMT MONTHLY MEMBERSHIP PROGRESS REPORT

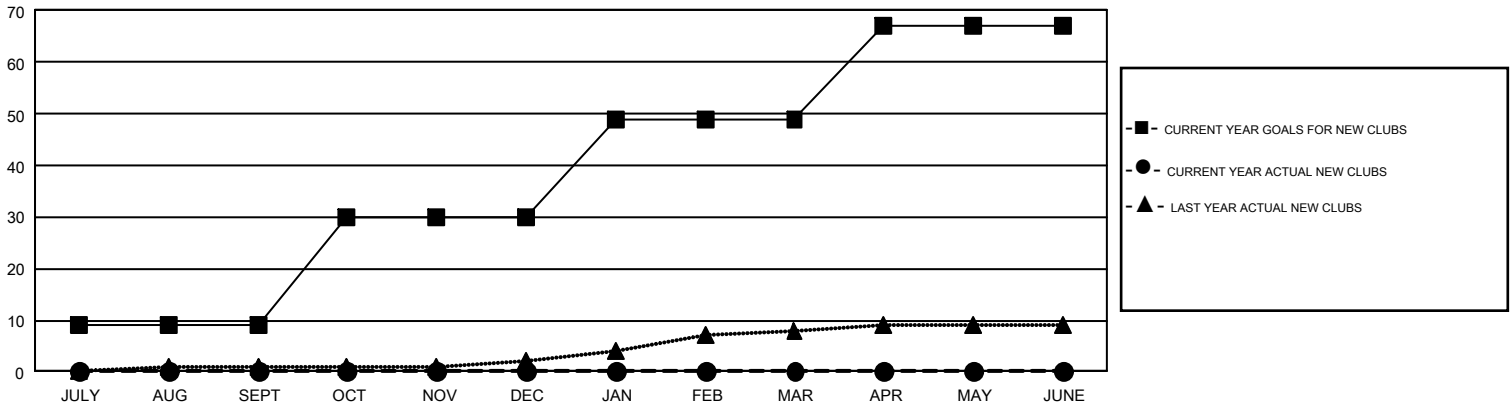
Results as of: 8/31/2019

GAT Constitutional Area 5 - Japan

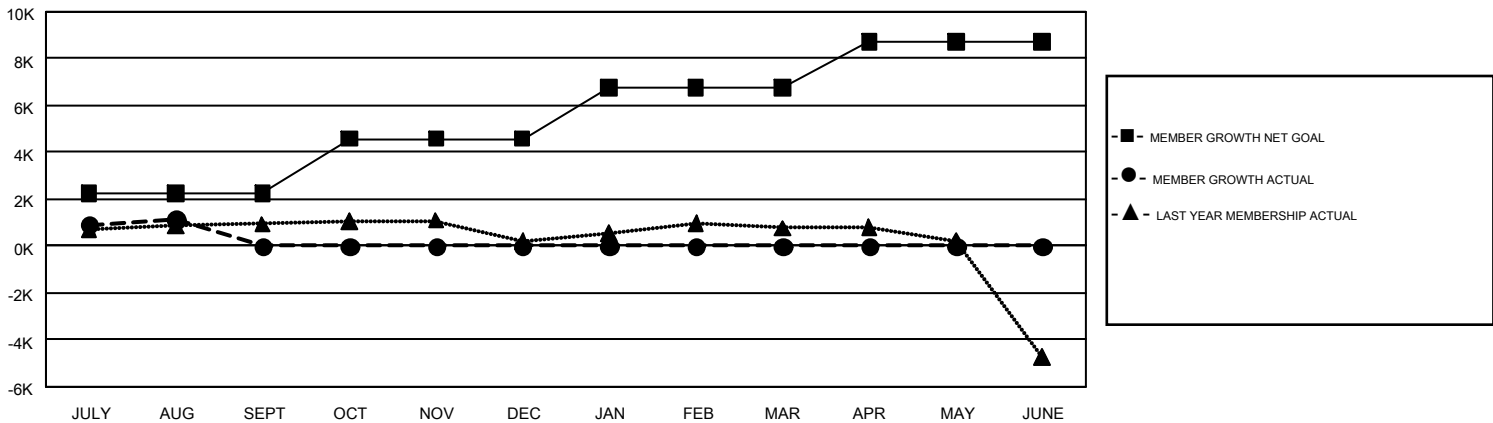
REPORT DOES NOT INCLUDE CLUBS IN UNDISTRICTED AREAS.

Clubs				Members			
RESULTS FOR 2019-2020				RESULTS FOR 2019-2020			
QUARTER	NEW CLUB GOAL	NEW CLUBS	DROPPED CLUBS	QUARTER	MEMBER GROWTH NET GOAL	MEMBER GROWTH ACTUAL	DROPPED MEMBERS ACTUAL (including transfers)
JULY/AUG/SEPT	9	0	6	JULY/AUG/SEPT	2230	2,699	1,400
OCT/NOV/DEC	21	0	0	OCT/NOV/DEC	2353	0	0
JAN/FEB/MAR	19	0	0	JAN/FEB/MAR	2172	0	0
APR/MAY/JUNE	18	0	0	APR/MAY/JUNE	1948	0	0

GOALS AND ACTUAL NEW CLUBS CUMULATIVE



GOALS AND ACTUAL MEMBERS CUMULATIVE



DROPPED CLUBS: 6	1,231 CLUBS OF 2,961 ADDED 1 OR MORE NEW MEMBERS	GENDER DISTRIBUTION MALE 84,762 (75.90%) FEMALE 26,919 (24.10%)
DROPPED MEMBERS DECEASED 128 CLUB CANCELLED 35 OTHER 1,237 TOTAL 1,400	CLICK HERE FOR CUMULATIVE MEMBERSHIP DATA	TOTAL FAMILY UNIT MEMBERS 42,004 FAMILY MEMBERS PAYING HALF DUES 22,922